



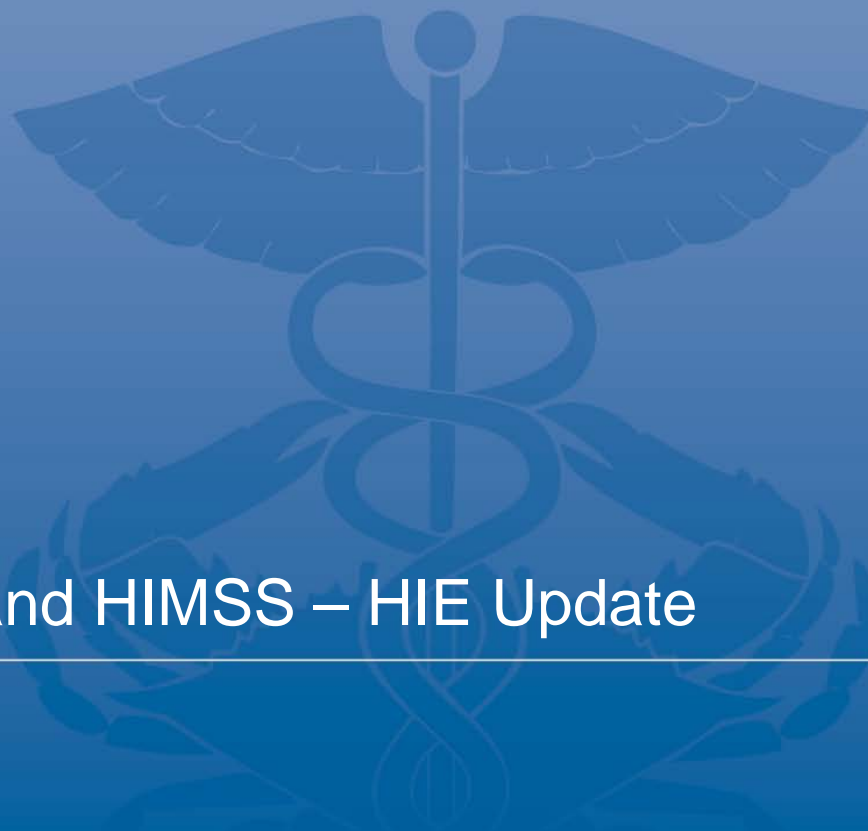
CRISP

*Connecting Physicians With Technology
to Improve Patient Care in Maryland*

Chesapeake Regional Information System for Our Patients

Maryland HIMSS – HIE Update

April 28th, 2011





What is CRISP?

Chesapeake Regional Information System for Our Patients

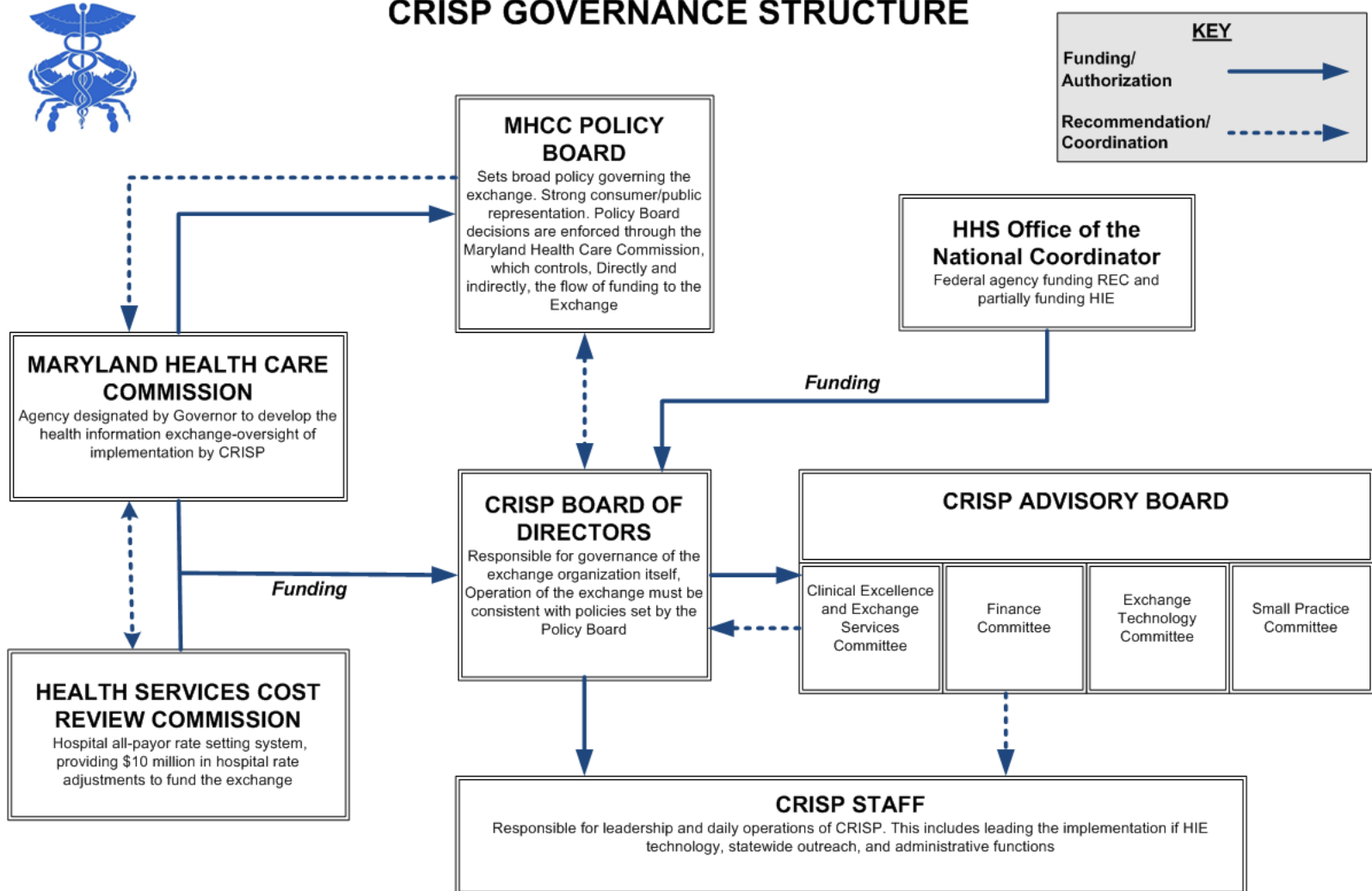
- CRISP (Chesapeake Regional Information System for our Patients) is Maryland's statewide health information exchange (HIE) and Regional Extension Center (REC)
 - **Health Information Exchange**, or HIE, allows clinical information to move electronically among disparate health information systems. The goal of HIE is to deliver the right health information to the right place at the right time—providing safer, more timely, efficient, effective, equitable, patient-centered care.
 - **Regional Extension Center (REC)** is a program created by the ONC that is funded through the stimulus bill. RECs will offer technical, implementation, and educational assistance to facilitate providers' adoption and meaningful use of electronic medical records (EMRs).



Governance

Chesapeake Regional Information System for Our Patients

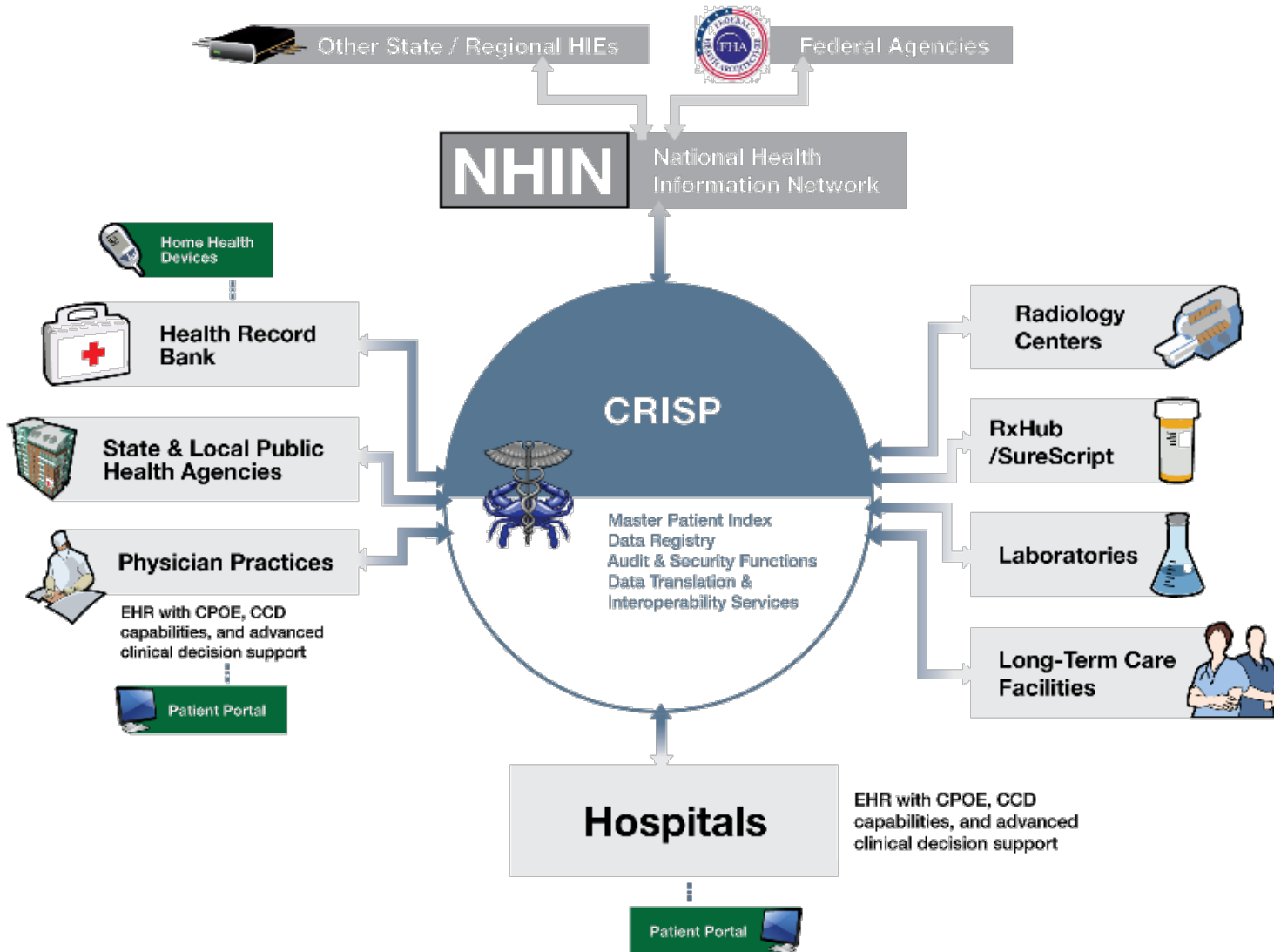
CRISP GOVERNANCE STRUCTURE





Infrastructure Design

Chesapeake Regional Information System for Our Patients





Initial Data Types Submitted / Available

Chesapeake Regional Information System for Our Patients

- Patient Demographics
- Lab Results
- Radiology Reports
- Electronic Documents (discharge summaries, history & physicals, operative notes, and consult notes)

Transport approaches include “pushing results,” “Querying or Searching for data,” or “subscribing” to specific patients



Montgomery County Go-Live (Phase 1) – Sept 30th

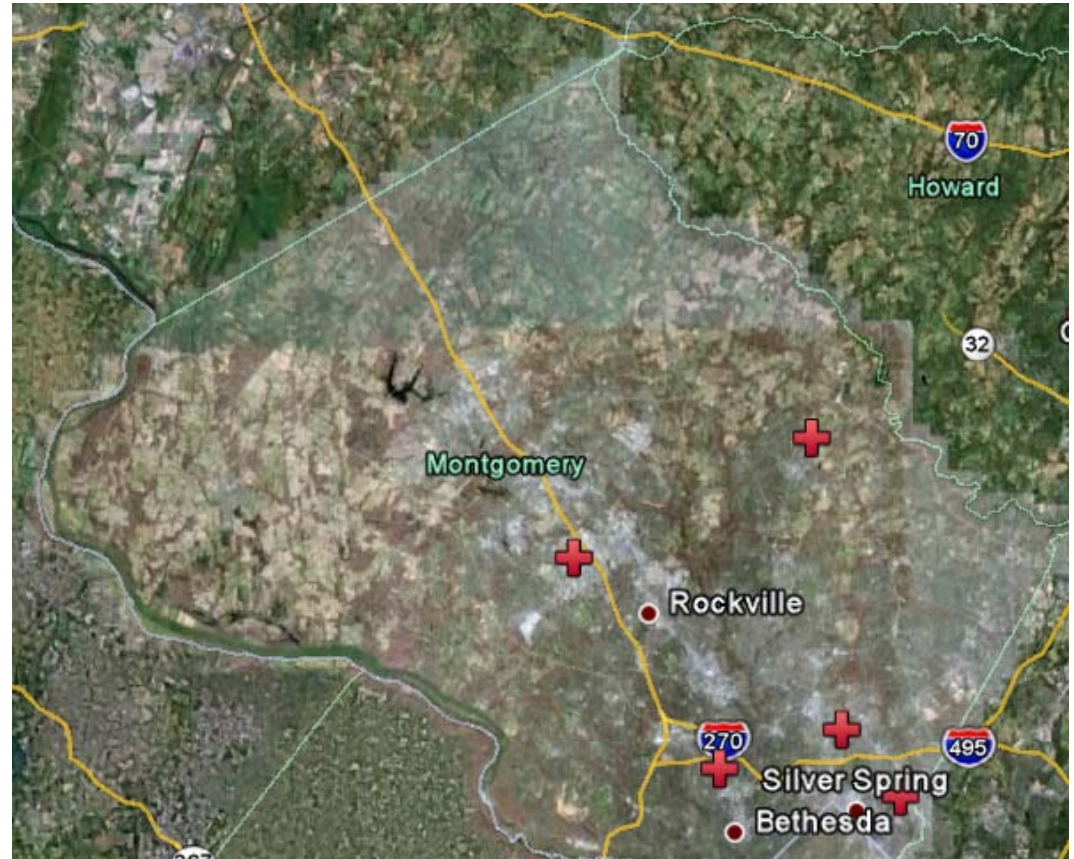
Chesapeake Regional Information System for Our Patients

Hospitals

- Washington Adventist
- Shady Grove Adventist
- Holy Cross Hospital
- Suburban Hospital
- Montgomery General

Other Data Providers

- American Radiology
- Advanced Radiology
- Community Radiology
- Quest
- LabCorp

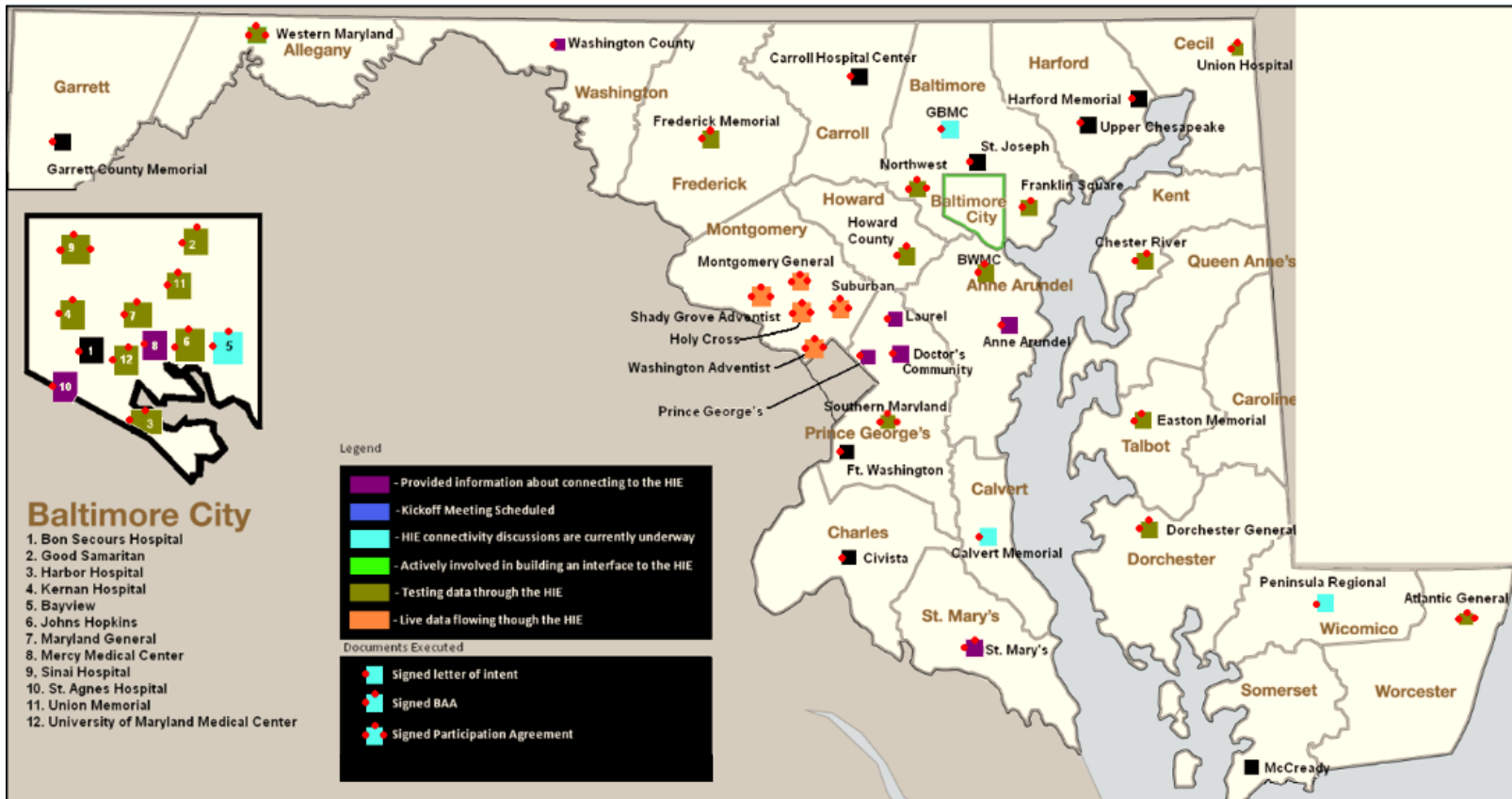




Next Phase Efforts: Additional Hospital Connectivity

Chesapeake Regional Information System for Our Patients

- CRISP has established relationships with nearly every hospital in the state at some level (we are currently “live with 9 hospital as “data providers”)
- We are actively working on technical connectivity with 30 hospitals (out of 46)
- We expect 15-20 additional hospitals to go over the next 6 months





Data Provider Strategy (near-term)

Chesapeake Regional Information System for Our Patients

- Target hospitals and large labs / radiology sites
- Identify multiple outbound data types that are most likely already existing in hospitals (i.e. HL7 ADT, Lab results)
- Take as much of the burden as possible onto CRISP rather than on the hospital



Current Use / Query Now Live

Chesapeake Regional Information System for Our Patients

- 200 Users at 6 sites (2 ERs, 2 PCP sites, 1 radiology site, 1 urgent care center, and a safety net clinic) – plan to hold at this level while we learn about workflow / policy issues
- Working toward connectivity to deliver results for a large hospital owned group of practices
- Delivering results to a number of small practices



Numbers at a Glance

Chesapeake Regional Information System for Our Patients

- **TO BE COMPLETED PRIOR TO 28th**



Public Health – Electronic Lab Reporting

Chesapeake Regional Information System for Our Patients

- MOU between CRISP and DHMH executed
- Live VPN connection between CRISP and DHMH
- Axolotl mapping to inbound DHMH Specification
- Quest will be first laboratory to participate
- CRISP and DHMH plan to evolve with CRISP acting as the primary mechanism to delivery reportable results